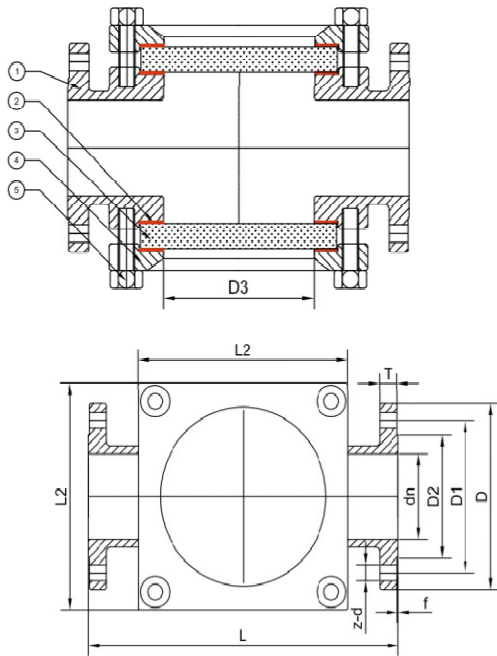




# CAST SIGHT GLASS

## Class 150 LBS



### Basic design features

<b>Design</b>	ASME B16.34
<b>Face to face</b>	MANUFACTOR STANDARD
<b>Flanges</b>	ASME B16.5
<b>Testing</b>	API 598
<b>Bore</b>	FULL
<b>Bonnet</b>	BOLTED
<b>Marking</b>	CE - PED
<b>Certificates</b>	EN 10204 - 3.1 / 3.2
<b>Rating</b>	150 LBS

### Test Pressure to API 598

<b>Class</b>	150 LBS
<b>Shell (Water)</b>	30 bar
<b>Seat (Water)</b>	22 bar
<b>Seat (Air)</b>	/

### BILL OF MATERIALS STANDARD ACCORDING TO ASTM

	PART NAME	WCB	CF8M	
1	BODY	A216 WCB	A351 CF8M	/
2	GASKET	SS + GRAPHITE	SS + GRAPHITE	/
3	GLASS	BOROSILICATE GLASS	BOROSILICATE GLASS	/
4	GLAND FLANGE	AS216 WCB	A351CF8M	/
5	BOLT	A193 B7M/2H	A 193 B8M/8M	/

On requests available in: 316-LF2-LCB

Glass material available in : Temperate glas

This document is the property of OPM ITALIA Srl. It must not be stored, reproduced or disclosed to others without Our written authorisation.

All data, subject to technical changes, are only for information and not for official use



## CAST SIGHT GLASS

### Class 150 LBS

SIZE INCH	L (MM)	L2 (MM)	D (MM)
1/2	130	62	90
3/4	150	62	100
1	160	62	110
1 1/4	250	78	120
1 1/2	250	78	12
2	250	95	150
2 1/2	250	95	180
3	250	111	190
4	250	111	230
5	320	130	255
6	320	130	280
8	320	130	345

O.P.M. ITALIA Srl Via Murri, 40 20013 Magenta - MI Italy Phone +39 02 97003091

[www.opmitalia.com](http://www.opmitalia.com) / email : [info@opmitalia.com](mailto:info@opmitalia.com)