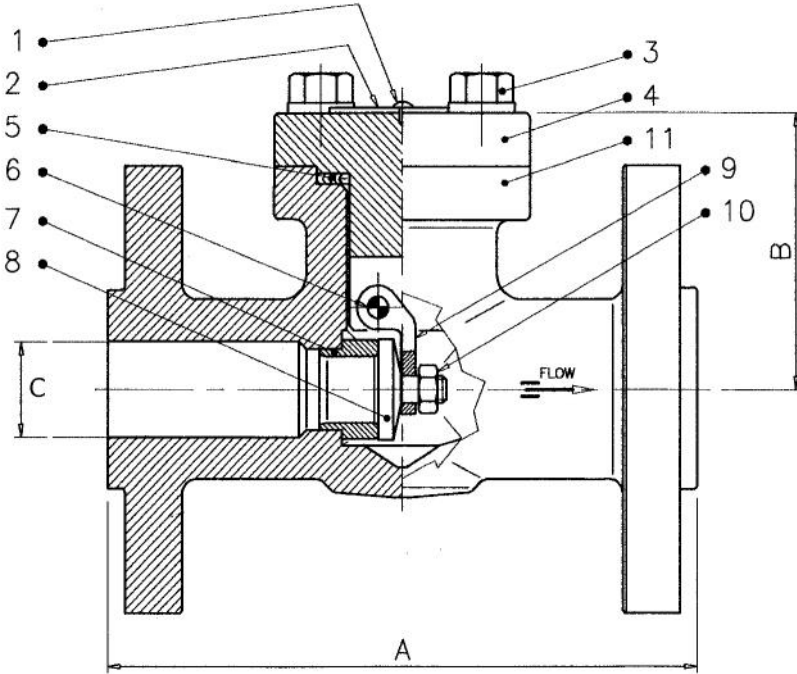


150-300-600 Lbs

DT-FSCV-002

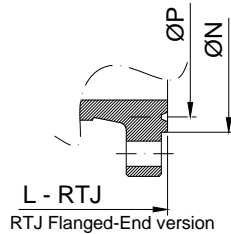
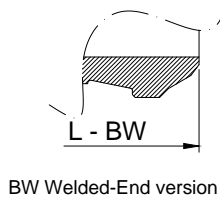


BASIC DESIGN STANDARDS

Basic Design	ISO 15761- BS 5352
Wall Thickness / Pressure / Temperature	According to ANSI B16.34
Ends	RF according to ANSI B16.5
Dimensions	B16.5
Bore	Reduced & Full

TEST PRESSURE TO API 598 bar

Class	Shell (water)	Seat (water)	Seat (air)
150	30	22	6.0
300	77	57	6.0
600	153	113	6.0



BILL OF MATERIALS STANDARD ACCORDING TO ASTM

No	Part Name	Carbon Steel		Alloy Steel	Stainless Steel
		A105/F6 (**)	A105/F6 HF	F11/F6 HF	SS316
01	Rivet	Carbon Steel	Carbon Steel	Carbon Steel	Carbon Steel
02	Name Plate	Aluminium	Aluminium	Aluminium	INOX
03	Bolts B/C	A193 B7	A193 B7	A193 B7	A193 B8
04	Cover	ASTM A105N	ASTM A105N	ASTM A182 Gr. F11	ASTM A182 Gr. F316L
05	*Gasket B/C	F316 + Graphoil	F316 + Graphoil	F316 + Graphoil	F316 + Graphoil
06	Hinge Pin	A479 TP316	A479 TP316	A479 TP316	A479 TP316L
07	Seat	A479 TP410	A479 TP410 + ST.6	A479 TP410 + ST.6	A479 TP316L
08	Swing	A479 TP410	A479 TP410 + ST.6	A479 TP410 + ST.6	A479 TP316L
09	Hinge	ASTM A182 F316	ASTM A182 F316	ASTM A182 F316	ASTM A182 F316L
10	Nut	A194 Gr.8	A194 Gr.8	A194 Gr.8	A194 Gr.8
11	Body	ASTM A105N	ASTM A105N	ASTM A182 Gr. F11	ASTM A182 Gr. F316L

(**) available from stock

* Recommended Spare Parts

150-300-600 Lbs

SIZE (Reduced Bore)		DIMENSION in mm (ANSI 150#) BB/WB				
Inches	mm	A	B	C	D	Kg (HANDWHEEL)
1/2"	15	108	70	10	-	2.6
3/4"	20	118	80	10	-	3.8
1"	25	127	92	18	-	5.1
1-1/2"	40	165	100	29.5	-	8.9
2"	50	203	140	36.5	-	14.3

SIZE (Full Bore)		DIMENSION in mm (ANSI 150#) BB/WB				
Inches	mm	A	B	C	D	Kg (HANDWHEEL)
1/2"	15	108	76	14	-	2.8
3/4"	20	118	80	18	-	4
1"	25	127	92	24	-	5.3
1-1/2"	40	165	100	36.5	-	9
2"	50	203	140	48	-	15

SIZE (Reduced Bore)		DIMENSION in mm (ANSI 300#) BB/WB				
Inches	mm	A	B	C	D	Kg (HANDWHEEL)
1/2"	15	152.5	50	9	-	2.8
3/4"	20	178	55	12.5	-	4.7
1"	25	216	70	17.5	-	5.7
1-1/2"	40	241	98	29	-	11.8
2"	50	267	110	35	-	17

SIZE (Full Bore)		DIMENSION in mm (ANSI 300#) BB/WB				
Inches	mm	A	B	C	D	Kg (HANDWHEEL)
1/2"	15	152.5	80	14	-	3
3/4"	20	178	85	18	-	5.1
1"	25	216	95	24	-	6
1-1/2"	40	241	102	36.5	-	12.5
2"	50	267	145	48	-	19

FORGED STEEL SWING CHECK VALVES CLASS 150- 300-600 LBS

150-300-600 Lbs

FORGED STEEL SWING CHECK VALVES CLASS 150- 300-600 LBS

SIZE (Reduced Bore)		DIMENSION in mm (ANSI 600#) BB/WB				
Inches	mm	A	B	C	D	Kg (HANDWHEEL)
1/2"	15	165	50	10	-	2.9
3/4"	20	191	55	14	-	4.8
1"	25	210	70	18	-	9.7
1-1/2"	40	241	98	30	-	12
2"	50	292	110	36.5	-	17.3

SIZE (Full Bore)		DIMENSION in mm (ANSI 600#) BB/WB				
Inches	mm	A	B	C	D	Kg (HANDWHEEL)
1/2"	15	165	80	14	-	3.1
3/4"	20	191	85	18	-	5.3
1"	25	210	95	24	-	6.2
1-1/2"	40	241	102	36	-	12.8
2"	50	292	145	48	-	19.2

ANSI CLASS
150 - 300 - 600 #

PRESSURE – TEMPERATURE RATINGS TO ANSI B16.34

Temperature °C	WORKING PRESSURE (bar.g)					
	ASTM A105N (a)			ASTM A182 SS316 (c)		
	150#	300#	600#	150#	300#	600#
-29 to 38	19.7	51.0	102.1	19.0	49.7	99.3
93	17.9	46.6	93.1	16.2	42.8	85.5
149	15.9	45.2	90.7	14.8	38.6	77.2
204	13.8	43.8	87.6	13.4	35.5	70.7
260	11.7	41.4	82.8	11.7	33.1	65.9
316	9.7	37.9	75.5	9.7	31.0	62.1
343	8.6	36.9	74.1	8.6	30.7	61.4
371	7.6	36.9	73.4	7.6	29.7	60.0
399	6.6	34.8	69.7	6.6	29.3	59.0
427	5.5	28.3	56.9	5.5	29.0	58.3
454	4.5	18.6	36.9	4.5	29.0	57.6
482	3.4	11.7	23.8	3.4	28.6	57.2
510	2.4	7.2	14.1	2.4	26.6	53.4
538	1.4	3.4	7.2	1.4	24.1	48.3

- (a) Permissible, but not recommended for prolonged usage above 427 °C
 (b) Permissible, but not recommended for prolonged usage above 594 °C
 (c) For welding end valves only: Flanged end ratings terminate at 538°C
 (d) Last Pressure: 816°C – 14,1 bar