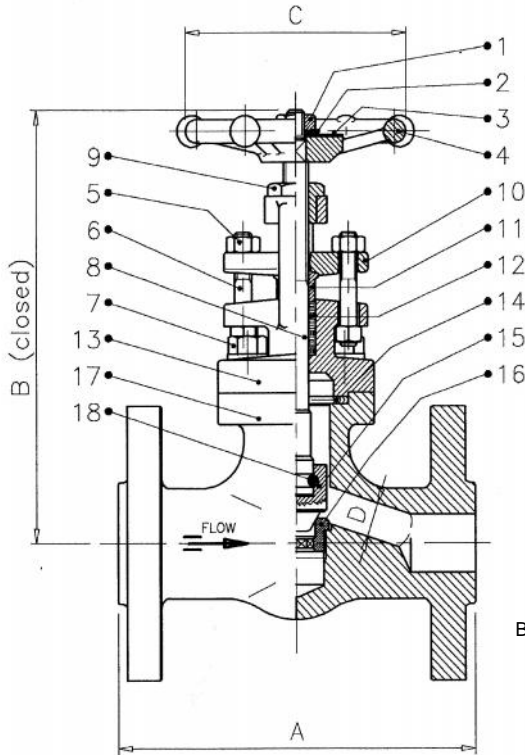


150 – 300 – 600 Lbs

DT-FDV-002



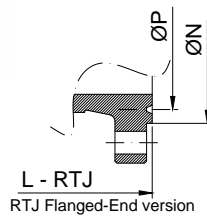
BASIC DESIGN STANDARDS

Basic Design	<u>ISO 15761</u>
Wall Thickness / Pressure / Temperature	According to ANSI B16.34
Ends Type	<u>RF according to ASME</u>
Dimensions	<u>B16.5</u>
Bore	<u>Reduced</u>

TEST PRESSURE TO API 598 bar

Rating	Shell (water)	Seat (water)	Seat (air)
150	30	22	6.0
300	77	57	6.0
600	153	113	6.0

BW Welded-End version



RTJ Flanged-End version

BILL OF MATERIALS STANDARD ACCORDING TO ASTM

No	Part Name	Carbon Steel	API TRIM 12	Stainless Steel
		A105/F6	A105/SS316 HF	SS316
01	Handwheel Nut	Carbon Steel	Carbon Steel	A194 Gr.8
02	Washer	Carbon Steel	Carbon Steel	A194 Gr.8
03	Name Plate	Aluminium		INOX
04	Handwheel	Carbon Steel	Carbon Steel	Carbon Steel + Rislan
05	Gland Nuts	A194 Gr. 2H	A194 Gr. 2H	A194 Gr.8
06	Gland Studs	AISI 410	AISI 410	A193 B8M
07	Bolts B/B	A193 B7	A193 B7	A193 B8
08	Stem	A479 TP410	A479 TP316L	A479 TP316L
09	Yoke Sleeve	AISI 416	AISI 416	AISI 416
10	Gland Flange	ASTM A105N	ASTM A105N	ASTM A316
11	Packing Gland	A479 TP316	A479 TP316	A479 TP316L
12*	Packing	Graphoil	Graphoil	Graphoil
13	Bonnet	ASTM A105N	ASTM A105N	ASTM A182 F316L
14*	Gasket B/B	F316 + Graphoil	F316 + Graphoil	F316 + Graphoil
15	Disc	A479 TP410	A479 TP316L + HF	A479 TP316L
16	Seat Ring	A479 TP410	A479 TP316L + HF	A479 TP316L
17	Body	ASTM A105N	ASTM A105N	ASTM A182 F316L
18	Wire Joint	ASTM A182 F316L	ASTM A182 F316L	ASTM A182 F316L

* Recommended Spare Parts

150 – 300 – 600 Lbs

SIZE (Reduced Bore)		#150 RF - DIMENSION in mm				
Inches	mm	A	B	C	D	Kg (HANDWHEEL)
1/2"	15	108	185	80	9	3.1
3/4"	20	118	192	80	12.5	4
1"	25	127	220	100	17.5	5.7
1-1/2"	40	165	265	140	29	10.6
2"	50	203	310	170	35	15.4

SIZE (Reduced Bore)		300# RF - DIMENSION in mm				
Inches	mm	A	B	C	D	Kg (HANDWHEEL)
1/2"	15	152.5	160	80	9	3.5
3/4"	20	178	168	80	12.5	4.8
1"	25	203	200	100	17.5	7.2
1-1/2"	40	229	268	140	29	14.5
2"	50	267	290	170	35	18

SIZE (Reduced Bore)		600# RF - DIMENSION in mm				
Inches	mm	A	B	C	D	Kg (HANDWHEEL)
1/2"	15	165	160	80	9	3.7
3/4"	20	190.5	168	80	12.5	5.3
1"	25	216	200	100	17.5	8.2
1-1/2"	40	241.5	268	140	29	15
2"	50	292	290	170	35	21.5

FORGED STEEL GLOBE VALVES CLASS 150-300-600# RF

150 – 300 – 600 Lbs

SIZE (Full Bore)		#150 RF - DIMENSION in mm				
Inches	mm	A	B	C	D	Kg (HANDWHEEL)
1/2"	15	108	185	80	12	3.2
3/4"	20	118	195	100	16	4.3
1"	25	127	220	120	21	5.9
1-1/2"	40	165	270	140	33	10.8
2"	50	203	320	170	45	18

SIZE (Full Bore)		300# RF - DIMENSION in mm				
Inches	mm	A	B	C	D	Kg (HANDWHEEL)
1/2"	15	152.5	185	80	12	4
3/4"	20	178	220	100	17.5	6.6
1"	25	203	250	120	22	8.5
1-1/2"	40	229	295	170	35	18
2"	50	267	350	170	45	26

SIZE (Full Bore)		600# RF - DIMENSION in mm				
Inches	mm	A	B	C	D	Kg (HANDWHEEL)
1/2"	15	165	185	80	12	4.2
3/4"	20	190.5	220	100	17.5	6.8
1"	25	216	250	120	22	8.8
1-1/2"	40	241.5	295	170	35	19
2"	50	292	350	170	45	28

FORGED STEEL GLOBE VALVES CLASS 150-300-600# RF

150 – 300 – 600 Lbs

ANSI CLASS
150 – 300 – 600 #

PRESSURE – TEMPERATURE RATINGS TO ANSI B16.34

Temperature °C	WORKING PRESSURE (bar.g)					
	ASTM A105N (a)			ASTM A182 SS316 (c)		
	150#	300#	600#	150#	300#	00#
-29 to 38	19.7	51.0	102.1	19.0	49.7	99.3
93	17.9	46.6	93.1	16.2	42.8	85.5
149	15.9	45.2	90.7	14.8	38.6	77.2
204	13.8	43.8	87.6	13.4	35.5	70.7
260	11.7	41.4	82.8	11.7	33.1	65.9
316	9.7	37.9	75.5	9.7	31.0	62.1
343	8.6	36.9	74.1	8.6	30.7	61.4
371	7.6	36.9	73.4	7.6	29.7	60.0
399	6.6	34.8	69.7	6.6	29.3	59.0
427	5.5	28.3	56.9	5.5	29.0	58.3
454	4.5	18.6	36.9	4.5	29.0	57.6
482	3.4	11.7	23.8	3.4	28.6	57.2
510	2.4	7.2	14.1	2.4	26.6	53.4
538	1.4	3.4	7.2	1.4	24.1	48.3

(a) Permissible, but not recommended for prolonged usage above 427 °C
 (b) Permissible, but not recommended for prolonged usage above 594 °C
 (c) For welding end valves only: Flanged end ratings terminate at 538°C
 (d) Last Pressure: 816°C – 14,1 bar