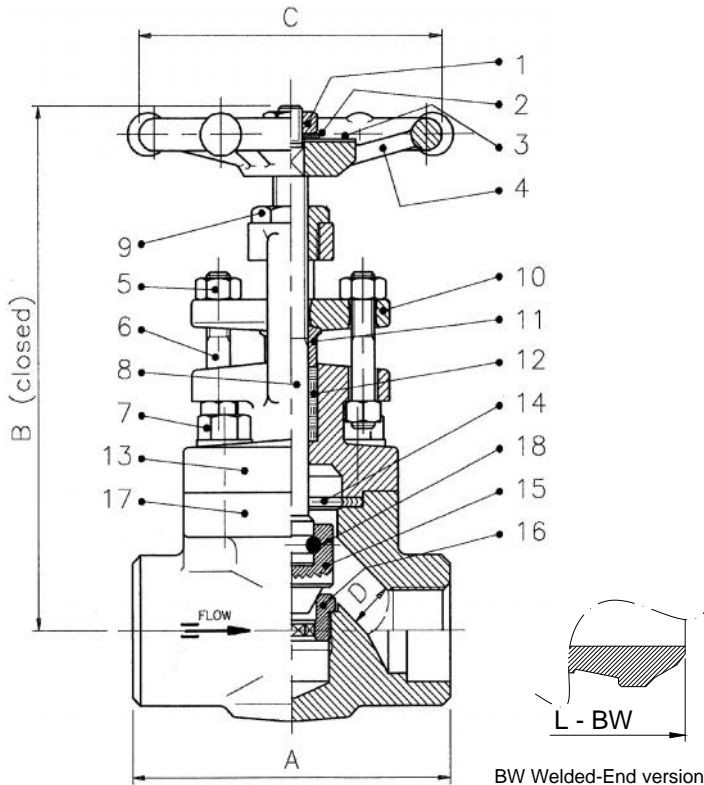


800 Lbs

DT-FDV-001



BASIC DESIGN STANDARDS

Basic Design ISO 15761 – BS5352

Wall Thickness / Pressure / Temperature According to ANSI B16.34

Ends SW according to ANSI

Dimensions B16.34 / NPT-F according to ASME B1.20

Bore Reduced & Full

TEST PRESSURE TO API 598 bar

Class	Shell (water)	Seat (water)	Seat (air)
800	204	150	6.0

BILL OF MATERIALS STANDARD ACCORDING TO ASTM

No	Part Name	Carbon Steel		Alloy Steel	Stainless Steel
		A105/F6	LF2/304	F11/F6 HF	SS316 HF
01	Handwheel Nut	Carbon Steel	Carbon Steel	Carbon Steel	A194 Gr.8
02	Whasher	Carbon Steel	Carbon Steel	Carbon Steel	A194 Gr.8
03	Name Plate	Aluminium	Aluminium	Aluminium	INOX
04	Handwheel	Carbon Steel	Carbon Steel	Carbon Steel	Carbon Steel + Rislan
05	Gland Nuts	A194 Gr. 2H	A194 Gr. 2H	A194 Gr. 2H	A194 Gr.8
06	Gland Studs	AISI 410	AISI 410	AISI 410	A193 B8M
07	Bolts B/B	A193 B7	A193 B7	A193 B7	A193 B8
08	Stem	A479 TP410	A479 TP304	A479 TP410	A479 TP316L
09	Yoke Sleeve	AISI 416	AISI 416	AISI 416	AISI 416
10	Gland Flange	ASTM A105N	ASTM A350 LF2	ASTM A182 F11	ASTM A316
11	Packing Gland	A479 TP410	A479 TP410	A479 TP410	A479 TP316L
12*	Packing	Graphoil	Graphoil	Graphoil	Graphoil
13	Bonnet	ASTM A105N	ASTM A350 LF2	ASTM A182 F11	ASTM A182 F316L
14*	Gasket B/B	F316 + Graphoil	F316 + Graphoil	F316 + Graphoil	F316 + Graphoil
15	Disc	A479 TP410	A479 TP304	A479 TP410 + STL.6	A479 TP316L + STL.6
16	Seat Ring	A479 TP410 (+STL.6**)	A479 TP304	A479 TP410 + STL.6	A479 TP316L + STL.6
17	Body	ASTM A105N	ASTM A350 LF2	ASTM A182 F11	ASTM A182 F316L
18	Wire Joint	Inconel 750	Inconel 750	Inconel 750	ASTM A182 F316L

* Recommended Spare Parts

FORGED GLOBE VALVES

800 Lbs

FORGED STEEL GLOBE VALVES CLASS 800 LBS

ANSI CLASS 800 **PRESSURE – TEMPERATURE RATINGS TO ANSI B16.34**

Temperature °C	WORKING PRESSURE (bar.g)		
	ASTM A105N (a)	ASTM A182 F11 (b)	ASTM A182 SS316 (c)
-29 to 38	136.2	137.9	132.4
93	124.1	137.9	114.1
149	120.7	132.8	103.1
204	116.5	127.6	94.5
260	110.0	122.4	87.9
316	100.7	111.4	83.1
343	98.6	108.3	81.7
371	97.9	104.5	80.0
399	92.7	97.9	78.6
427	75.8	93.4	77.6
454	49.3	89.7	76.9
482	31.7	82.8	76.2
510	19.0	58.6	71.0
538	9.6	39.7	64.5

(a) Permissible, but not recommended for prolonged usage above 427 °C
(b) Permissible, but not recommended for prolonged usage above 594 °C
(c) For welding end valves only: Flanged end ratings terminate at 538°C

SIZE (Reduced Bore)		DIMENSION in mm				
Inches	mm	A	B	C	D	Kg (HANDWHEEL)
1/2"	15	80	160	78	9	1.8
3/4"	20	90	170	78	12.5	2.0
1"	25	110	200	100	17.5	3.3
1-1/4"	32	127	235	120	22.5	5.4
1-1/2"	40	155	270	140	29	7.9
2"	50	170	290	170	35	10.8

SIZE (Full Bore)		DIMENSION in mm				
Inches	mm	A	B	C	D	Kg (HANDWHEEL)
1/4"	8	80	160	78	7	1.8
3/8"	10	80	160	78	9	1.8
1/2"	15	90	170	78	12.5	2.0
3/4"	20	110	200	100	17.5	3.3
1"	25	127	235	120	22.5	5.4
1-1/4"	32	155	270	140	29	7.9
1-1/2"	40	170	290	170	35	10.8
2"	50	210	345	170	45	19